



Euroexpo Fairs Srl | J40/8828/2014 | CUI 33423058; 20, Moise Nicoara Street, District 3, 030902 Bucharest; Phone: +40 21 321 60 30, Fax: +40 21 321 60 35, E-mail: metalshow@euroexpo.ro; www.metalshow.ro



Romexpo SA | J40/14818/1991 | CUI RO1555425; Subscribed and paid in share capital: 29 619 840 Lei; 65-67, Marasti Blvd Street, District 1, 011465 Bucharest; Phone: +40 21 207 70 00, Fax: +40 21 207 70 70, E-mail: romexpo@romexpo.ro; www.romexpo.ro



**METAL SHOW**

**MAY 17 - 20, 2017**

**ROMEXPO**

**Cod: 01**

**Indoor Standard Stand**



- Walls on the outline (except the opened sides) from panels and modular structure (L panel = 1 m / H panel = 2,5 m / open H = 2,3 m)
- Carpet – one use only
- Fascia board with company name, on the open sides of the stand
- Electrical connection 230V/3kW.
- The stand also includes 1 sqm office (with 1 curtain, 1 pannel, 1 clothes hanger).

**Price: 15 Euro/sqm**

Equipment	Indoor Standard Stand Area						
	4-11 sqm	12-20 sqm	21-30 sqm	31-50 sqm	51-70 sqm	71-90 sqm	over 91sqm
Spotlight	2	4	6	8	10	12	14
220 V Plug	1	1	1	2	2	3	3
Table	1	1	1	2	3	4	6
Chairs	2	4	6	8	9	12	14
Clothes hanger	1	1	1	1	2	2	2
Garbage bin	1	1	1	1	2	2	2

**Cod: 02**

**Stand EXTRA**



The equipment of this stand are the following:

- Walls on the outline (except the open sides) from panels and modular structure (L panou=1 m / H=3,5 m / H liber =2,3m)
- Single use carpet
- Office with folding door
- Table with 4 chairs
- Clothes hanger, trash bin
- Lighting system: spotlights
- Electrical connection 230V/3kW
- Full color print on adhesive paper

\*) personalized offer depending on area



Euroexpo Fairs Srl | J40/8828/2014 | CUI 33423058; 20, Moise Nicoara Street, District 3, 030902 Bucharest; Phone: +40 21 321 60 30, Fax: +40 21 321 60 35, E-mail: metalshow@euroexpo.ro; www.metalshow.ro



Romexpo SA | J40/14818/1991 | CUI RO1555425; Subscribed and paid in share capital: 29 619 840 Lei; 65-67, Marasti Blvd Street, District 1, 011465 Bucharest; Phone: +40 21 207 70 00, Fax: +40 21 207 70 70, E-mail: romexpo@romexpo.ro; www.romexpo.ro



## METAL SHOW

## MAY 17 - 20, 2017

## ROMEXPO

Cod: 03

Stand ADVANTAGE



The equipment of this stand are the following:

- Building system: MSB modular structure
- Single use carpet
- Office with folding door
- Lighting system: reflectors
- Table with 4 chairs
- Clothes hanger, trash bin
- Graphics on the background banner
- Electrical connection 230V/3kW

\*) personalized offer depending on area

Cod: 04

Stand TOP



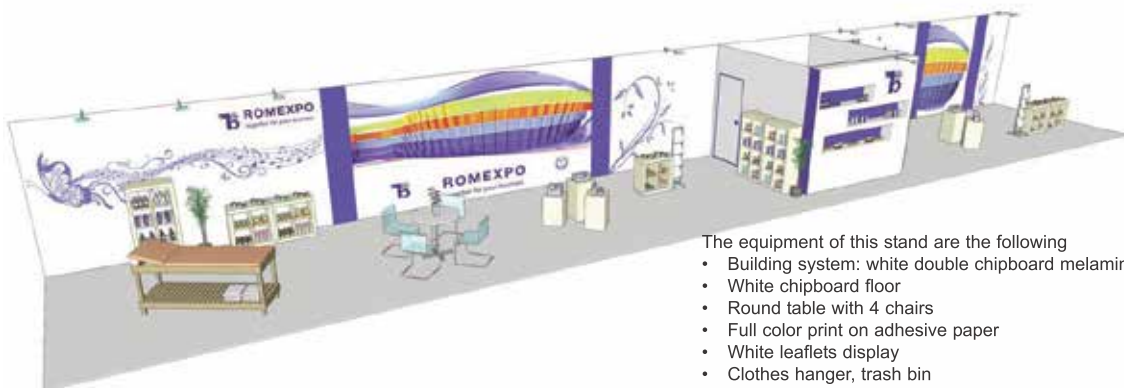
The equipment of this stand are the following:

- Building system: octanorm modular structure, adhesive PFL panels, MSB modular structure
- Single use carpet
- Office with folding door
- LCD TV and DVD
- Clothes hanger, trash bin
- Leaflets display
- Desk
- Lighting system: reflectors
- Electrical connection 230V/3kW

\*) personalized offer depending on area

Cod: 05

Stand PREMIUM



The equipment of this stand are the following

- Building system: white double chipboard melamine
- White chipboard floor
- Round table with 4 chairs
- Full color print on adhesive paper
- White leaflets display
- Clothes hanger, trash bin
- Ornamental plants
- Electrical connection 230V/3kW

\*) personalized offer depending on area



Euroexpo Fairs Srl | J40/8828/2014 | CUI 33423058; 20, Moise Nicoara Street, District 3, 030902 Bucharest; Phone: +40 21 321 60 30, Fax: +40 21 321 60 35, E-mail: metalshow@euroexpo.ro; www.metalshow.ro

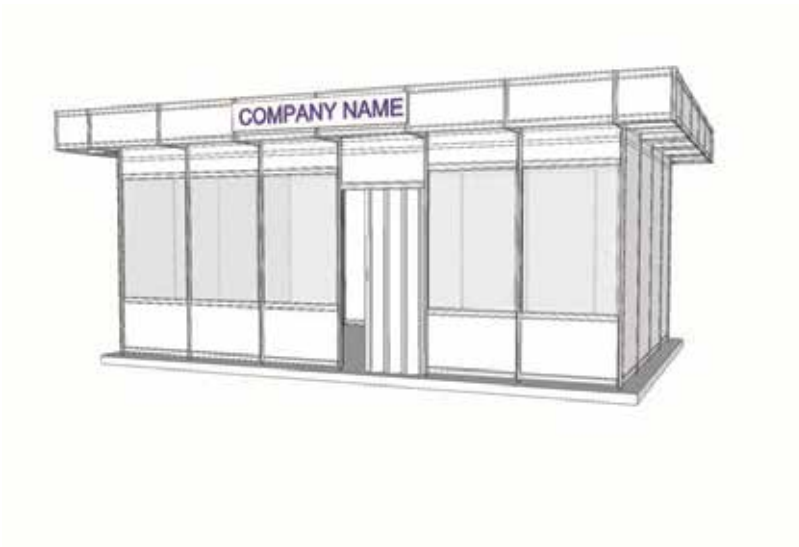


Romexpo SA | J40/14818/1991 | CUI RO1555425; Subscribed and paid in share capital: 29 619 840 Lei; 65-67, Marasti Blvd Street, District 1, 011465 Bucharest; Phone: +40 21 207 70 00, Fax: +40 21 207 70 70, E-mail: romexpo@romexpo.ro; www.romexpo.ro



**Cod: 06**

**Outdoor Standard Stand**



- Walls on the outline, platform/stage, roof
- Carpet – one use only
- Fascia board with company name, on the main side of the booth
- Power panel 230V/3kW
- 1 table, 3 chairs, 1 garbage bin, 1 spotlights/4sqm, 1 plug
- The stand also includes 1 sqm office (with 1 curtain, 1 pannel, 1 clothes hanger)

**Cod: 07**

**Outdoor Customized Stand**



The customized stand is built up based on a commonly agreed structure

The structures available:

- Modular structure
- Stage structure
- Ready built wooden lodge

\*) personalized offer depending on area

